



(Photo by Daria Perevezentsev)

New Items

Monitoring COVID-19 Conditions

The University of Toronto continues to monitor [Toronto](#), [Peel](#), and [provincial](#) public health guidance. Staying up-to-date on your COVID-19 vaccinations offers the best protection against severe illness and reduces disruptions to your on-campus activities in the event that you are exposed to COVID-19 or test positive. Information on vaccination eligibility and how to book an appointment is available on the Ontario provincial vaccines portal.

[You can read the full memo here.](#)

Fall Planning and End of Mask Requirement

As of July 1, 2022, the University's mask requirement has been lifted and continues to be subject to any changes in public health guidance. Some members of our community may choose to continue to wear a mask after July 1. We ask everyone to respect each other's decisions, comfort levels, and health needs. We have created [a new optional poster for departments to use to support the choices of the community.](#)

As of May 1, 2022, health screening and contact tracing is not available in UCheck. Although health screening through UCheck is unavailable, individuals can monitor their health using the Provincial health screening tool. Completing a health screening before coming to campus is highly recommended, and we continue to ask members of our community to remain at home if they are ill. Individuals may continue to upload their vaccination status into UCheck.

For additional support and resources, please see [UTogether](#).

IN THIS NEWSLETTER

NEW ITEMS

- Monitoring COVID-19 Conditions
- Fall Planning and End of Mask Requirement
- Medical Mask Distribution Points
- Indoor Air Quality (IAQ) Concerns
- Ventilation
- Ventilation Information Request
- JHSC Health & Safety Board Locations

COVID-19 REMINDERS

- COVID-19 Isolation Requirements
- COVID-19 Resources
- COVID-19 Air Purifier Filters in Classrooms Signage Update
- COVID-19 Updated Signage
- COVID-19 F&S Strategies
- University of Toronto's General Workplace Guidelines
- Legionella and Ventilation Testing

ADMIN REMINDERS

- JHSC Newsletters Webpage
- Monkeypox Information
- JHSC Minutes & Inspection Reports
- Health and Safety Boards
- Type 3 Asbestos Abatement Work
- Important Policies
- Safety Training
- New Updates to EHS Website
- EHS JHSC SharePoint & Tutorial
- CUPE3902 Unit 1, Unit 3, Unit 6, & Unit 7 Reimbursement
- F&S Service Alerts
- EHS JHSC Building Coverage per Building
- Interested in joining a JHSC?

Medical Mask Distribution Points

Medical masks are available for pickup on all three campuses to community members with an active UTORID as supplies allow. For a list of locations, please see [Information about Masks](#).

Indoor Air Quality (IAQ) Concerns

If you have any concerns about indoor air quality (IAQ), please report the concern to your supervisor. Similar to other health and safety concerns, supervisors have responsibilities for health and safety in the workplace and workers are responsible for reporting hazards to their supervisor. EHS (ehs.office@utoronto.ca) is also available to provide support and conduct an assessment to identify workplace hazards and provide recommendations to address concerns. JHSC members who are approached by workers about IAQ concerns should also encourage workers to report their concerns to their supervisor and EHS.

Ventilation

The University implemented a sector-leading ventilation strategy that includes improvements to existing ventilation systems that service all parts of buildings, including classrooms, labs, offices, meeting rooms, and hallways. Further to this, air-change assessments have met a high-ventilation target in all classrooms that are in use. These exceptional ventilation standards will continue. See [U of T's HVAC strategy website](#) for more information.

Ventilation Information Request (by building)

As mentioned in previous communications, the University has developed and implemented a [Tri-campus HVAC Strategy](#) as part of an overall ventilation approach for both instructional and non-instructional spaces and buildings. As part of the [Strategy](#), where applicable, measures have been taken to increase ventilation (e.g. performing air flushing two hours before occupancy every morning and upgrade filtration) and upgrading ventilation.

The upgraded filters, which meet public health and other experts' recommendations, are rated MERV-13, up from MERV-8 previously. Same as before the pandemic, the University continues to maintain our ventilation systems on a regular basis. If additional information on ventilation is required, please contact your JHSC with the request. Please note that such requests may require **weeks** to complete depending on the size and complexity of the ventilation system. In the interim, locations can be assessed on a case-by-case basis.

JHSC Health & Safety Board Locations

A listing of [JHSC Health & Safety Board Locations](#) has been created. Please note, updates are regularly made as units move, occupy new space, etc. For any questions for corrections to the list, please contact ehs.jhsc@utoronto.ca.

COVID-19 Reminders

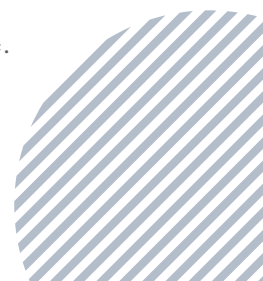
COVID-19 Isolation Requirements

The COVID-19 Isolation requirements from the Ministry of Health has been updated. You can find more information on [EHS's Procedures in the Event of Confirmed/Symptomatic Case or Exposure to COVID-19 page](#).

COVID-19 Resources

[UTogether](#) is a one-stop hub of information on how the University is responding to the pandemic. For all the latest information please check the [UTogether](#), and [Safe Environment](#) websites.

The University of Toronto continually updates our [frequently asked questions](#) related to COVID-19 and our community.



COVID-19 Air Purifier Filters in Classrooms Signage Update

There are regular filter checks for air purifiers that have been centrally installed in classrooms. For more information, please refer to: [COVID-19 Air Purifier Filters in Classrooms](#).

COVID-19 Updated Signage

Please see updated [COVID-19 Precaution/Symptoms Poster](#) on our COVID-19 Posters & Resources Page. At this time, you may now remove and store signage put up in response to unit GATs where applicable, such as entry mask poster, maximum occupancy limits and traffic flow signage.

COVID-19 F&S Strategies

The University of Toronto is committed first and foremost to the health and safety of our entire community. To achieve this, the University has developed F&S COVID-19 Strategies.

Please see University of Toronto's [COVID-19 Caretaking Tri-Campus Strategy](#) and [COVID-19 heating, ventilation and air conditioning \(HVAC\) strategy](#) for more information.

University of Toronto's General Workplace Guidelines

The University's [COVID-19 General Workplace Guidelines](#) (GWG) was sent out to JHSC co-chairs on July 10, 2020. Ongoing updates are made to this document to align with provincial and public health guidelines. While drafting, reviewing and approval of institutional guidelines is an employer responsibility, we encourage the JHSCs to read the document and welcome you to engage with management through your usual channels on any queries or recommendations you may have with respect to the application of the Guideline to worksites within your JHSC's jurisdiction.

You may access the most updated version of the GWG on the EHS [COVID-19 Information](#) webpage. Please also review [Returning to Campus - The Division of People Strategy, Equity & Culture](#) for more information regarding returning to campus. We encourage JHSC members to review and submit any questions or considerations to [EHS JHSC](#).

Legionella and Ventilation Testing

We encourage interested JHSCs to regularly check the [Water Testing Schedule](#) for the most up-to-date information on legionella testing in their building and to contact [EHS JHSC](#) if a JHSC worker member is interested in attending the beginning of legionella and/or ventilation testing.

With regards to the query about JHSC consultation and provision of reports for ventilation measurements, the type of measurements collected in the air audit report do not provide a direct measurement of COVID-19 transmissibility risk but are measurements that the University collects as part of regular building maintenance to verify that the relevant equipment is operating as expected. We understand that during the pandemic, staff, faculty and students may want more information about building maintenance related data and we are therefore sharing this information as requested and we invite JHSCs who wish to attend, when these measurements are taken, to contact [EHS JHSC](#) for building level schedules.

Ongoing Reminders

JHSC Newsletter Webpage


For your reference, all previously sent JHSC newsletters can be accessed [here](#).

Monkeypox Information

For the latest information, please visit [EHS's Monkeypox Information page](#).

JHSC Minutes & Inspection Reports

As a reminder, please send all minutes and inspection reports to [EHS JHSC](#). If you have not submitted your minutes/workplace inspections for 2022 or earlier, please do so as soon as possible.



Health and Safety Boards

EHS is conducting its annual audits of health and safety boards on campuses, and updating/removing applicable items. Please inform EHS when boards have been installed, relocated, or removed. [A list of required postings and links for download is available from the EHS webpage.](#)

Type 3 Asbestos Abatement Work

Type 3 asbestos abatement air sampling results are available on the Asbestos Data website. For more information, please see [Type 3 Asbestos Abatement Information](#).

Important Policies

We encourage the JHSCs to review the following policies regularly: [Policy with Respect to Workplace Harassment](#), [Policy with Respect to Workplace Violence](#), and [Health and Safety Policy](#).

Safety Training

The University offers numerous training courses for its employees, specific to their workplace context (Administration/Facilities & Lab Environments) and regularly updates the training courses on an ongoing basis. We encourage the JHSCs to review our training offerings relevant to their specific work and welcome the JHSCs to provide us with any feedback regarding training content.

If you have any questions regarding relevant training required for your specific work, please speak with your supervisor. If you have any questions regarding EHS-offered training courses and related University-developed training content, please contact [EHS JHSC](#).

New Updates to EHS Website

For more information, please visit our updated EHS [mould](#) and [ergonomics](#) resource pages.

EHS JHSC SharePoint & Tutorial

The EHS JHSC Module has been phased out and replaced with the [EHS JHSC SharePoint](#). **Please note, all JHSC members will automatically receive an email once minutes/workplace inspections are uploaded to the JHSC SharePoint.** The "Other Reports and Documents" tab will include sampling reports or other applicable JHSC documents. Please [click here](#) for a tutorial on how to use the new EHS JHSC SharePoint. For more information or questions, please contact [EHS JHSC](#).

CUPE3902 Unit 1, Unit 3, Unit 6, and Unit 7 Reimbursement

To request for reimbursement for JHSC related activities, please complete the [CUPE3902 Unit 1, Unit 3, Unit 6, and Unit 7 Pay Request Form](#), obtain approval from the manager co-chair and forward a copy to ehs.jhsc@utoronto.ca and Hso@cupe3902.org.

F&S Service Alerts

To receive alerts for planned and unplanned services and shutdowns for your building, please sign up for [F&S Alerts](#).

EHS JHSC Building Coverage per Building

A listing of [JHSC coverage per building](#) has been updated. Please note, updates are regularly made as units move, occupy new space, etc. For any questions for corrections to the list, please contact ehs.jhsc@utoronto.ca.

Interested in joining a Joint Health and Safety Committee?

Please contact [your JHSC](#) for any vacancies. As a reminder, in accordance with the Occupational Health and Safety Act, worker members are appointed by their respective union. For more information, please see [JHSC FAQs](#) or contact [EHS JHSC](#).