



July 2025

Page 1 of 4

## New Items



### EHS002 Basic Health and Safety Awareness Training

All employees, including:

- **Faculty,**
- **Appointed Staff Members,**
- **Part-Time Staff,**
- **Casuals,**
- **Summer Students**



Is required to complete an occupational health and safety training program per Regulation 297/13 of the Occupational Health and Safety Act (OHSA). To meet this requirement, all employees must complete EHS002 Basic Health and Safety Awareness Training via My EHS Training.

### Health & Safety Board Audit (Update)

A big thank-you 🙌😊 to everyone who took part in this year's audit. Special recognition goes to **Maria Guimaraes (JHSC Coordinator)** and **Ronald Ng (Occupational Hygiene Technician)** in EHS for their leadership and dedication in the success of this year's audit.

## IN THIS NEWSLETTER

### NEW ITEMS

**EHS002 Basic Health and Safety Awareness Training**

**Health & Safety Board Audit (Update)**

**Tick Awareness and Prevention**

**Heat Stress**

### REMINDERS

Respiratory Illnesses [e.g. Influenza (flu), Respiratory Syncytial Virus (RSV), COVID-19, and etc.]

Legionella and Ventilation Testing

Reporting Health And Safety Concerns

Reporting Indoor Air Quality (IAQ) Concerns

Environmental Health & Safety Resources

EHS JHSC SharePoint & Distribution

Workplace Inspections

Safety Training

Asbestos Management Program

Facilities & Services Alerts

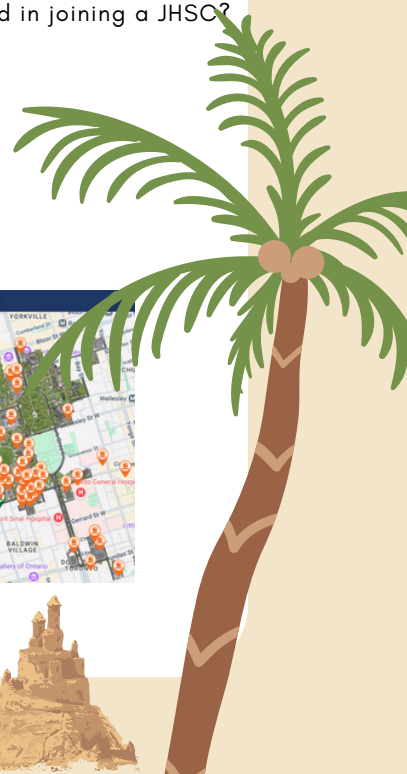
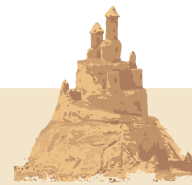
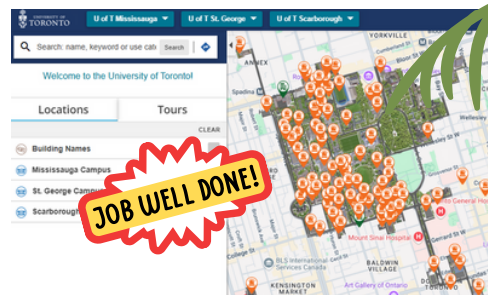
Eye Wash Inspection

Emergency Preparedness

Interested in joining a JHSC?

### 📍 What's Next?

EHS will be connecting with individual JHSC co-chairs to address any discrepancies identified as needed. These updates will then be reflected in the UofT map.



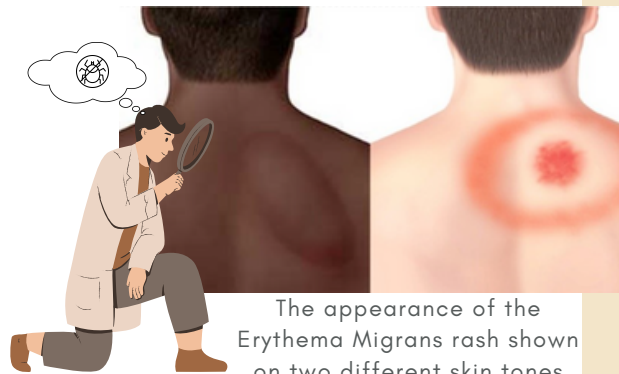
## Tick Awareness and Prevention

Ticks are becoming increasingly common across Ontario, particularly during the warmer months from Spring through late Fall. Refer to the [Tick Awareness and Prevention](#) page on how to protect yourself and recognize potential tick bites.

Blacklegged Tick (Deer Tick)



Recognizing Blacklegged Ticks (also known as Deer Ticks)



## Heat Stress

Summer is here, heat can put stress on our body's cooling system! Refer to EHS' "[Guidelines on Heat Stress - Working in Hot Environments](#)" on how the University supports staff who may be exposed to heat, either indoors or outdoors, during their work.

In addition, Health Canada published a "[Infographic: Staying Healthy in the Heat](#)" to bring awareness to Canadians.



# Reminders

## **Respiratory Illnesses [e.g. Influenza (flu), Respiratory Syncytial Virus (RSV), COVID-19, and etc.]**

EHS provides resources for managing respiratory illnesses such as flu, RSV, and COVID-19, and etc. These include guidelines on vaccination, self-screening tools, informational posters, procedures for illness management, and protocols for returning to campus. For further questions, please reach out to EHS.

## **Legionella and Ventilation Testing**

We encourage interested JHSCs to regularly check the Water Testing Schedule for the most up-to-date information on legionella testing in their building and to contact EHS if a JHSC worker member is interested in attending the beginning of legionella and/or ventilation testing. You can find it on our website here. For more information regarding legionella, you can visit our Legionella FAQs page.

## **Reporting Health And Safety Concerns**

If you have any health and safety concerns, please report them to your supervisor. Supervisors have responsibilities for health and safety in the workplace, and workers are responsible for reporting hazards to their supervisors. EHS has an Online Accident/Incident eForm that should be completed and submitted by the worker's supervisor in the event of an incident or injury. Additionally, EHS is also available to provide support by conducting assessments to identify workplace hazards and providing recommendations to address concerns. JHSC members who are approached by workers about health and safety concerns should also encourage workers to report their concerns to their supervisors and/or EHS directly.

## **Reporting Indoor Air Quality (IAQ) Concerns**

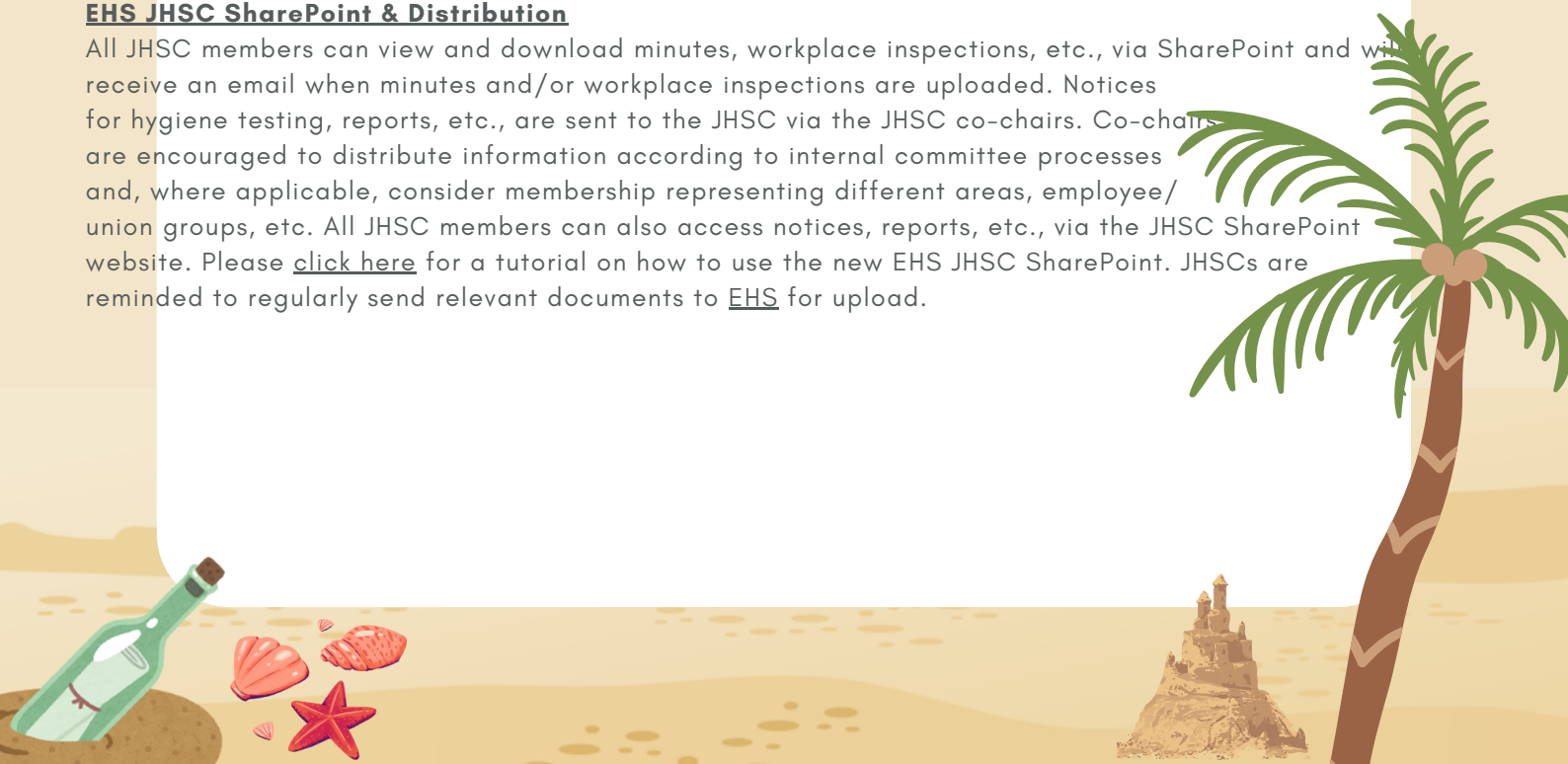
As always, report any health and safety concerns to your supervisor. EHS can also be contacted to assess individual situations for any IAQ related questions or concerns. For more information regarding IAQ, you can visit the IAQ page.

Environmental Health & Safety website contains a lot of information and resources:

- Monthly JHSC Newsletter
- All 200+ health & safety boards, its location list, and the required postings
- Health & Safety Policy
- Policy with respect to Workplace Harassment and Workplace Violence Workplace Violence
- JHSC coverage per building
- AED Locations for St. George, UTM, and UTSCT

## **EHS JHSC SharePoint & Distribution**

All JHSC members can view and download minutes, workplace inspections, etc., via SharePoint and will receive an email when minutes and/or workplace inspections are uploaded. Notices for hygiene testing, reports, etc., are sent to the JHSC via the JHSC co-chairs. Co-chairs are encouraged to distribute information according to internal committee processes and, where applicable, consider membership representing different areas, employee/union groups, etc. All JHSC members can also access notices, reports, etc., via the JHSC SharePoint website. Please click here for a tutorial on how to use the new EHS JHSC SharePoint. JHSCs are reminded to regularly send relevant documents to EHS for upload.





## Workplace Inspections

JHSCs are required to conduct workplace inspections each month so that the entire workplace is inspected by the end of the year. EHS offers various resources such as: online training (EHS415 JHSC Workplace Inspection), [Workplace Inspection Report Template](#), and [Workplace Inspections Tips for Before and After](#) - full listing and resources are available through the EHS site under "[JHSC Listing & Resources](#)".

It is the area supervisor's responsibility to correct any items noted in the workplace inspection report by completing the right side of the table and submitting a completed copy to [EHS JHSC](#). For re-occurring hazards, please include projected timeline for corrective action in the applicable section.

Please review the [Process Table](#) and [FAQs](#) regarding workplace inspections.

## Safety Training

The University offers numerous training courses for its workers, specific to their workplace context ([Administration/Facilities](#), [Lab Environments](#), [JHSC Training](#), etc.) and regularly updates the training courses on an ongoing basis. We encourage the JHSCs to review our training offerings relevant to their specific work and welcome the JHSCs to provide us with any feedback regarding training content. If you have any questions regarding relevant training required for your specific work, please speak with your supervisor. If you have any questions regarding EHS-offered training courses and related University-developed training content, please contact [EHS](#).

## Asbestos Management Program

Type 3 asbestos abatement air sampling results are available on the Asbestos Data website. For more information, please see [Type 3 Asbestos Abatement Information](#).

## Facilities & Services Alerts

To receive Facilities & Services (F&S) alerts for building related-services (e.g. service outages, shutdowns, Type 2 and 3 asbestos work), please subscribe to [F&S Alerts](#). Please note: Subscription to F&S alerts is currently available only for St. George at this time.

## Eyewash Inspection

It is the responsibility of the lab to conduct regular eyewash flushing and documentation. For more information, please see University of Toronto [Safety Eyewash and Shower Standard](#).

## Emergency Preparedness

The [University of Toronto's Emergency Preparedness website](#) provides essential resources in responding to crisis or emergency situations for students, faculty, librarians, staff, and affected community members. This platform outlines the University's comprehensive emergency response with its [UTAlert](#), [Campus Status & Important Contacts](#), [Responding to Incidents](#), [During an Emergency](#), and [Emergency Preparedness](#).

## Interested in joining a JHSC?

Please contact [your JHSC](#) for any vacancies. As a reminder, in accordance with the Occupational Health and Safety Act (OHSA), worker members are appointed by their respective union. For more information, please see [JHSC FAQs](#). Alternatively, you can contact [EHS](#) or your union directly.

