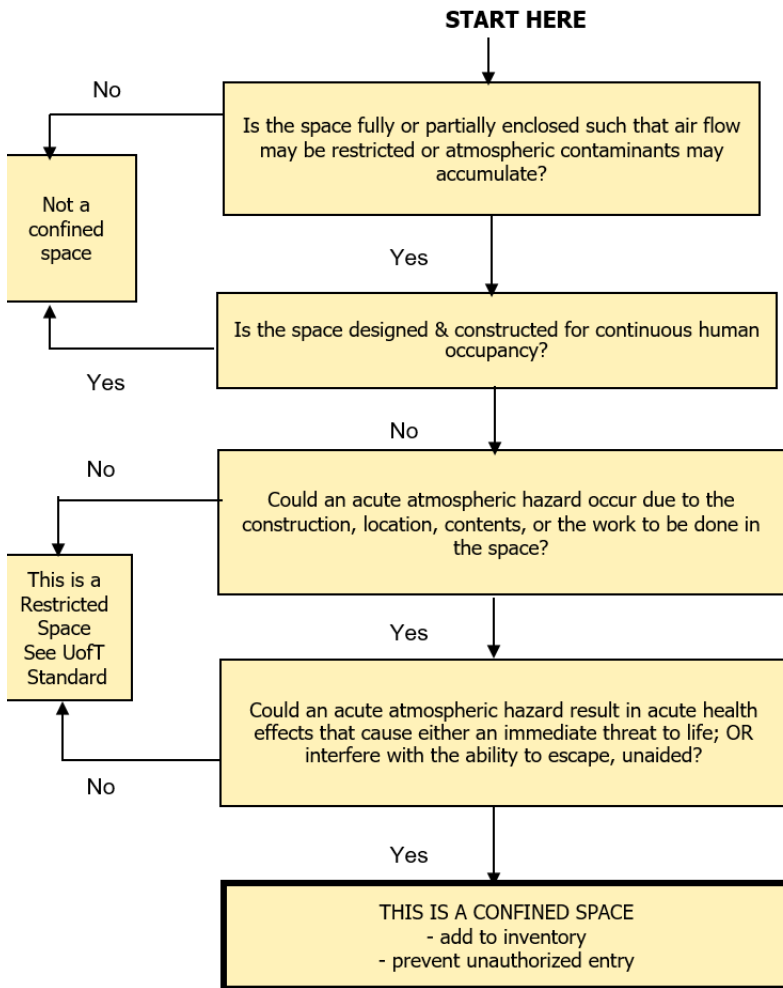


Recognizing a Confined Space



DEFINITIONS

Fully enclosed : (complete walls, floor ceiling, access only by a limited opening e.g., a tank)

Partially enclosed: (one or more walls, floor , ceiling is absent or a large percentage of surface area is opened to adjacent non-confined space areas e.g., an open pit) such that air may be restricted or atmospheric contaminants may accumulate?

A space designed for continuous human occupancy:
 - has provisions for structural adequacy, ventilation, lighting, access and egress (e.g., full size doors) is designed and constructed according to codes (e.g., Ont. Building Code, Ont. Fire Code, CSA B53, Mechanical Refrigeration Code)
 - i.e. is NOT made primarily to contain, move or manipulate materials or equipment

Acute atmospheric hazards are (O.Reg 623/05) :
 -accumulation of flammable, combustible or explosive agents, or
 - oxygen content in the atmosphere that is less than 19.5% or more than 23 % or
 -accumulation of atmospheric contaminates, including gases, vapours, fumes, dusts or mists

Immediate threat to life :
 -e.g. unconsciousness, respiratory distress, impaired judgement, death

Interfere with a person's ability to escape unaided:
 -without respiratory protection, emergency equipment or assistance from other person's e.g. strong irritation, drowsiness, confusion