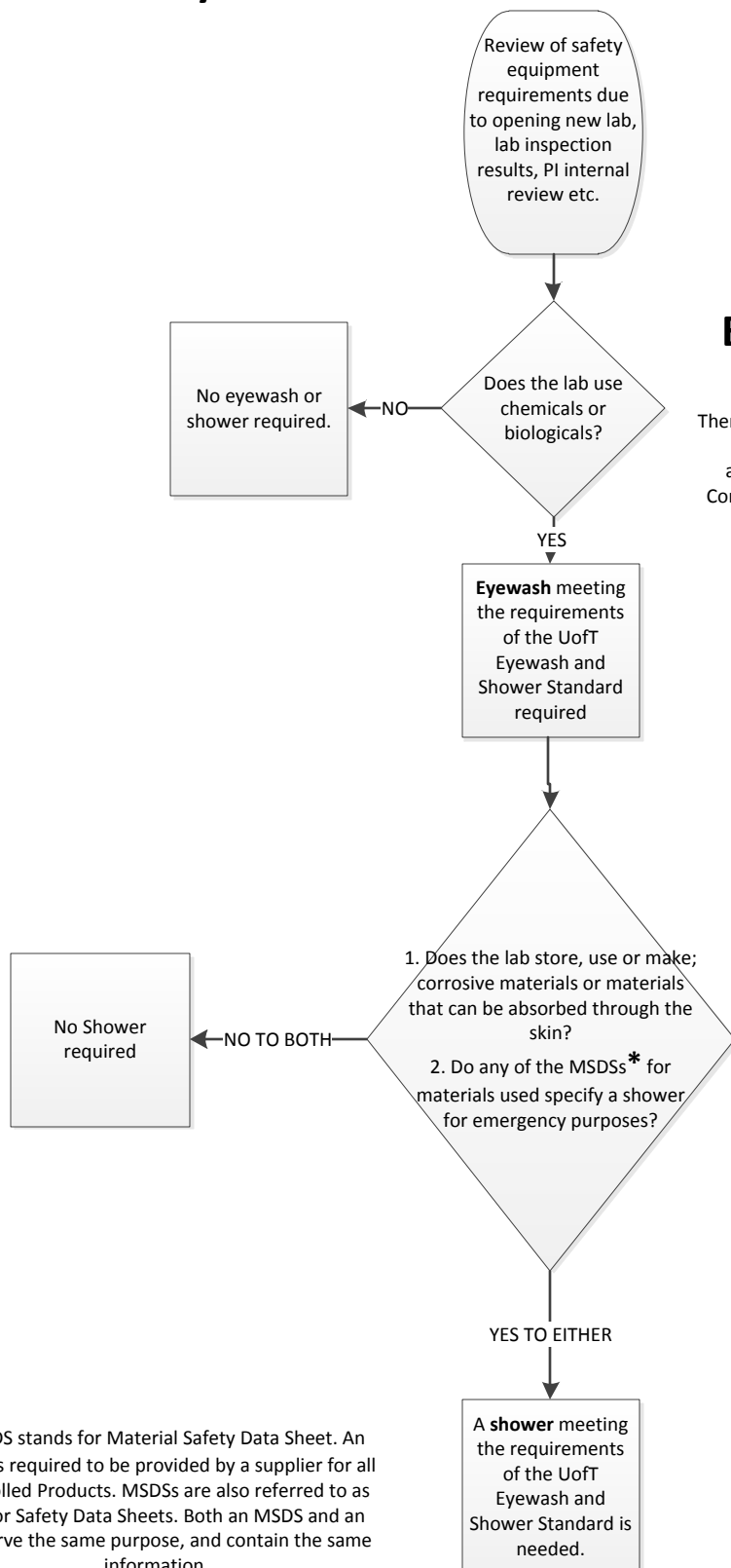




## Eyewash and Shower Needs Assessment Flowchart



### Eyewash Needed?

There may be instances where biological or chemical usage is so limited that an eyewash is not specified by a risk assessment, however this situation is very uncommon. Consult with EHS if it is thought the lab fits this description.

### Deluge Shower Needed?

In general terms a lab that restricts use/storage of strong acids/bases or other corrosives to concentrations of 1 Molar or less and quantities of 1L or less would represent a lower risk for injury due to skin exposure. Labs that do not use/store materials that can be absorbed through the skin in quantities greater than 250mL would be lower risk. Labs that meet both stipulations may not need a shower. This does not mean that the Ministry of Labour would absolve the PI or the University in the event of an incident, however it means an incident is less likely to occur.

If the answer is YES only to question 2, and the material is not corrosive or otherwise harmful in skin contact, then contact EHS for further advice.

\* MSDS stands for Material Safety Data Sheet. An MSDS is required to be provided by a supplier for all Controlled Products. MSDSs are also referred to as SDSs or Safety Data Sheets. Both an MSDS and an SDS serve the same purpose, and contain the same information.